

**ARAÑA SIN TALADROS  
PARA DOBLE ACRISTALAMIENTO**

PF-H

Adaptable a refs. 2426 y 2427

Acabados:

Inox brillo	<b>2442 IB</b>
-------------	----------------

\*Bajo pedido



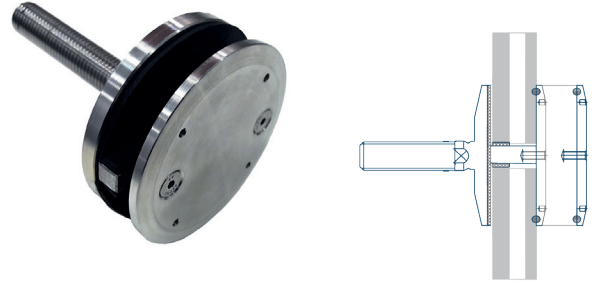
**ARAÑA SIN TALADROS  
Ø 80 MM**

PF-C

Acabados:

Inox brillo	<b>2443 IB</b>
-------------	----------------

\*Bajo pedido



**RÓTULAS ARTICULADAS**

AISI-316

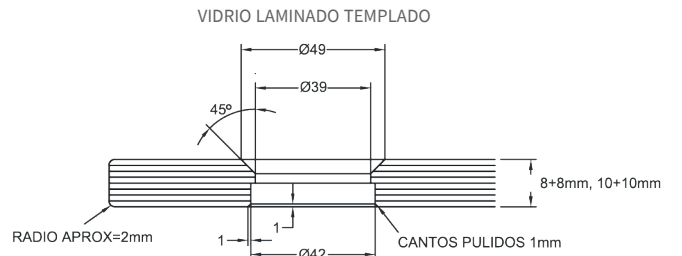
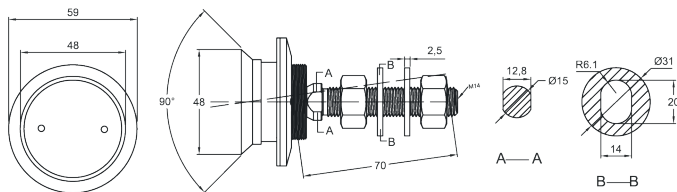
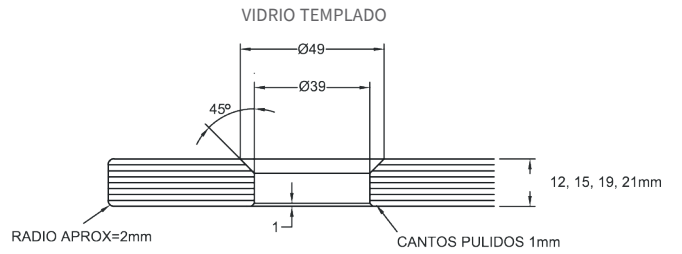
**RÓTULA ARTICULADA**

Vidrio 12/21 mm

Incluye 2 arandelas y dos tuercas DIN439

RE1221 M14

**2421**



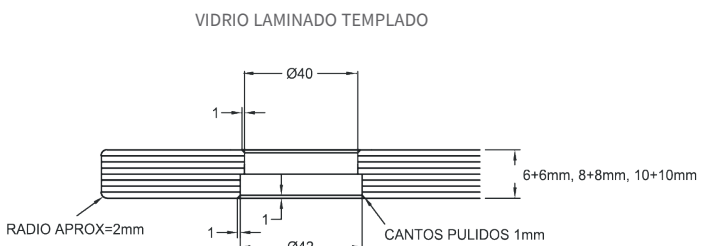
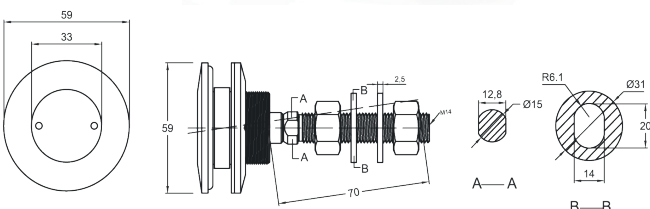
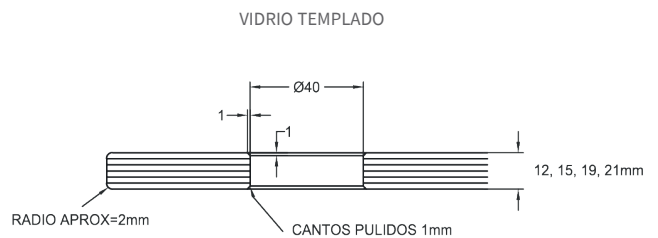
**RÓTULA ARTICULADA  
CON TAPÓN EXTERIOR**

RT1221 M14

Vidrio 12/21 mm

Incluye 2 arandelas y dos tuercas DIN439

**2422**





### RÓTULA ARTICULADA

Vidrio de cámara 28/36 mm

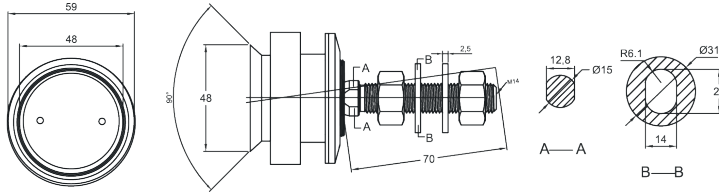
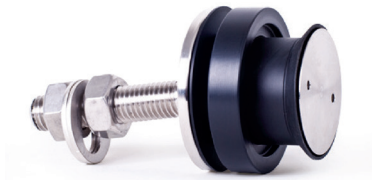
Incluye 2 arandelas y dos tuercas DIN439

2423

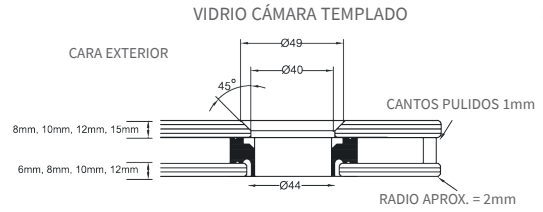
### SEPARADOR DE NYLON PARA CÁMARA

2423.1

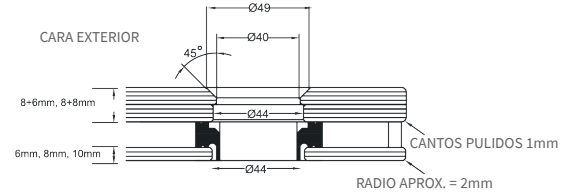
\*Especificar grosor de cámara



RD2836 M14  
FISEP



### VIDRIO CÁMARA LAMINADO TEMPLADO



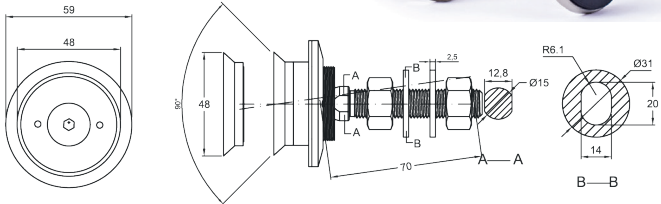
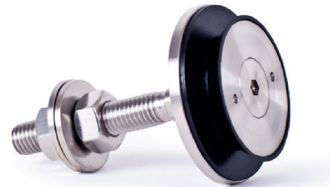
### RÓTULA ARTICULADA

Vidrio 10/21 mm

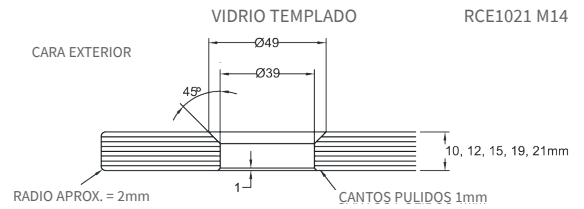
Incluye 2 arandelas y dos tuercas DIN439

Fijación exterior

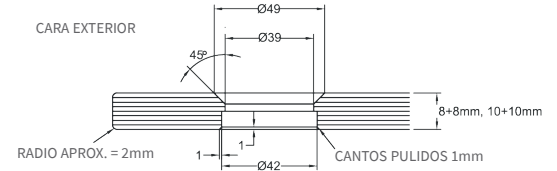
2424



RCE1021 M14



### VIDRIO LAMINADO TEMPLADO



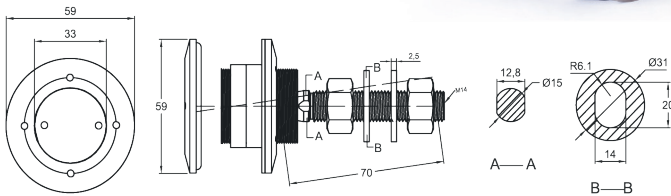
### RÓTULA ARTICULADA CON TAPÓN EXTERIOR

Vidrio 10/21 mm

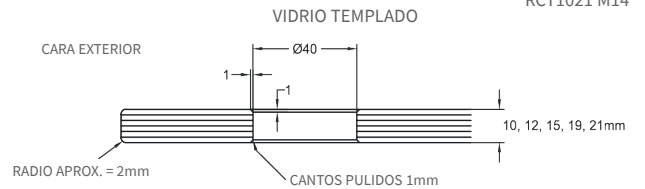
Incluye 2 arandelas y dos tuercas DIN439

Fijación exterior

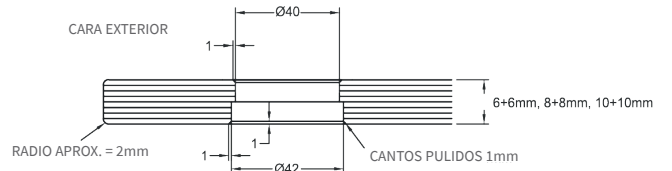
2425



RCT1021 M14



### VIDRIO LAMINADO TEMPLADO

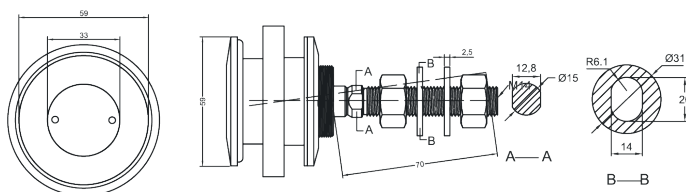


### RÓTULA ARTICULADA CON TAPÓN EXTERIOR

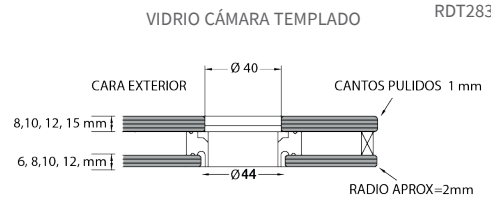
Vidrio de cámara 28/36 mm

Incluye 2 arandelas y 2 tuercas DIN439 y separador de nylon

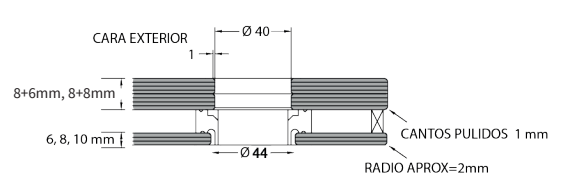
2428



RDT2836 M14



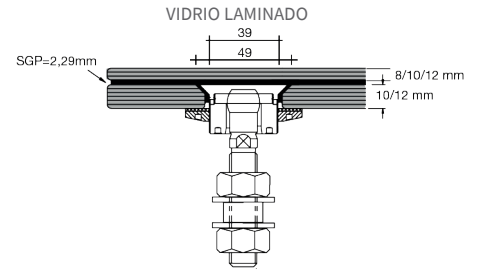
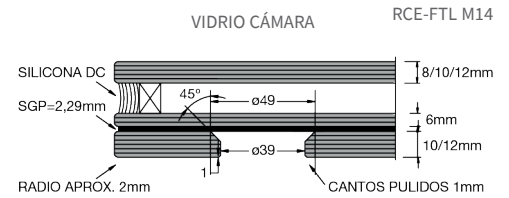
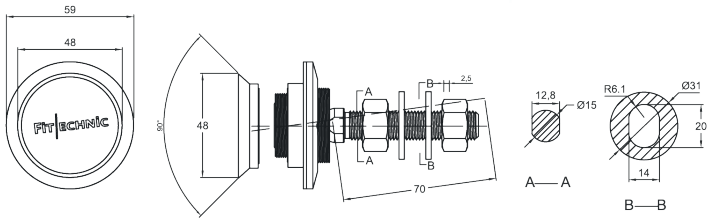
### VIDRIO CÁMARA LAMINADO TEMPLADO



**RÓTULA ARTICULADA PARA EMBUTIR EN LAMINADO O CÁMARA**

Vidrio interior 10/12 mm  
 Vidrio exterior según proyecto  
 Incluye 2 arandelas y 2 tuercas DIN 439

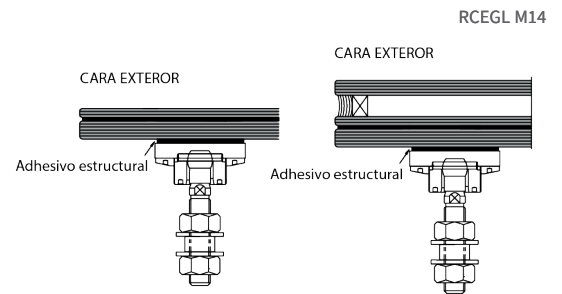
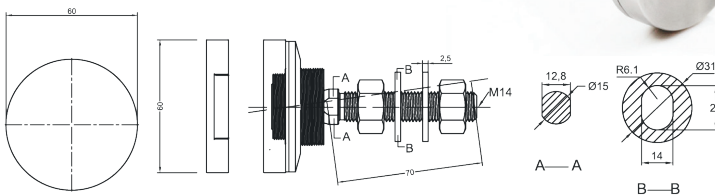
2429



**RÓTULA ARTICULADA PARA ADHESIVO**

Adhesivo estructural tipo UV, DP490, TSSA  
 Sin taladro

2436



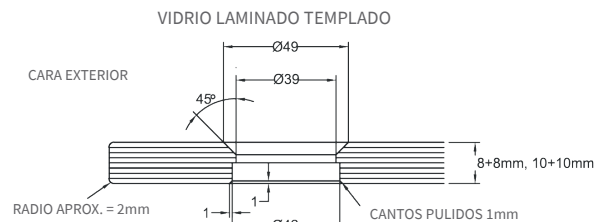
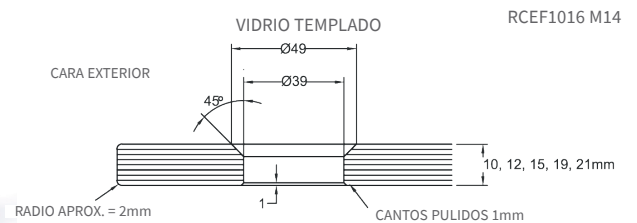
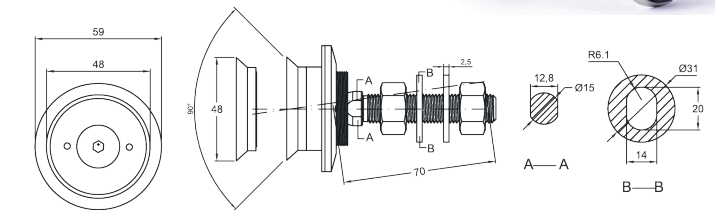
**RÓTULAS FIJAS**

AISI-316

**RÓTULA FIJA**

Vidrio 10/16 mm  
 Incluye 2 arandelas y 2 tuercas DIN439  
 Fijación exterior

2433



**RÓTULA FIJA CON TAPÓN EXTERIOR**

Vidrio 10/21 mm  
 Incluye 2 arandelas y 2 tuercas DIN439  
 Fijación exterior

2434

